



KONICA MINOLTA

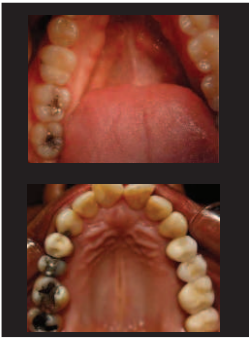
# ARE You Satisfied with Your Current Print Quality & Cost

## Introducing DNP Range FOTOLUSIO Printers

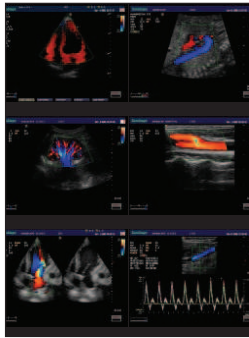
The first thing to consider when thinking about FOTOLUSIO prints for your business is its outstanding print quality which helps you offer prints to match your reputation. Then consider FOTOLUSIO printers for its seamless Network print capabilities to connect to all your imaging modalities not to forget that FOTOLUSIO printers offer the highest print quality at an affordable cost be it colour or B/W.



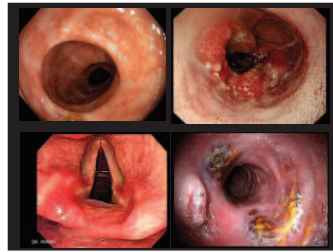
RVG / Oral Camera



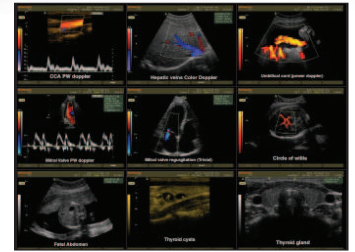
Ultrasound



Endoscope



Ultrasound



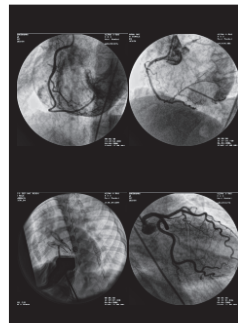
RVG



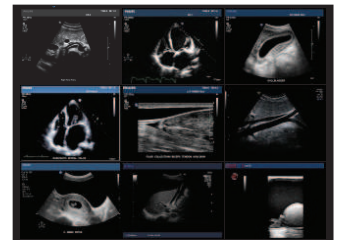
Ultrasound



C-arm / Cath Lab



Ultrasound



# DSRX1

B & W / COLOUR PRINTER

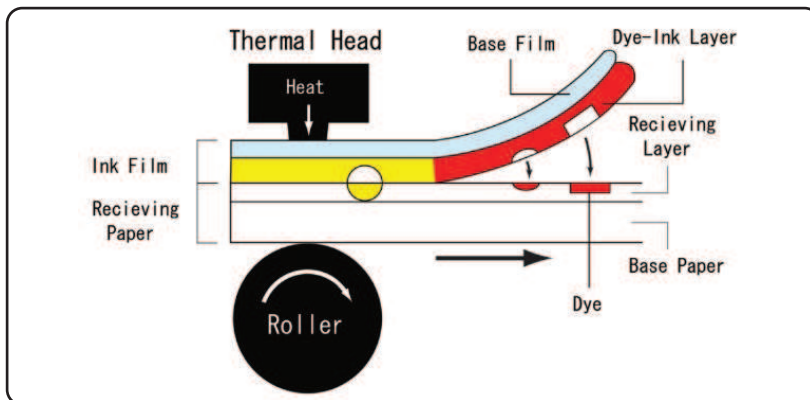
Giving shape to ideas

**Dye Sublimation Printing Technology**

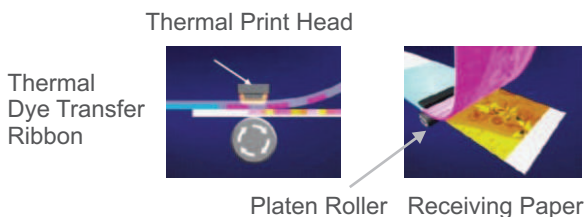
**Ink ribbon :** A thin polyester film coated with ink, in a sequence of yellow, magenta, Cyan and Overcoat.

**Paper :** An exclusive receiving paper.

The dye ink is transferred to the paper, according to the amount of heat applied from the thermal Head.



**Dye Sublimation Printing Process**



Thermal Dye Transfer Ribbon

Color panels used to print 1 image



Yellow      Magenta      Cyan      Overcoat

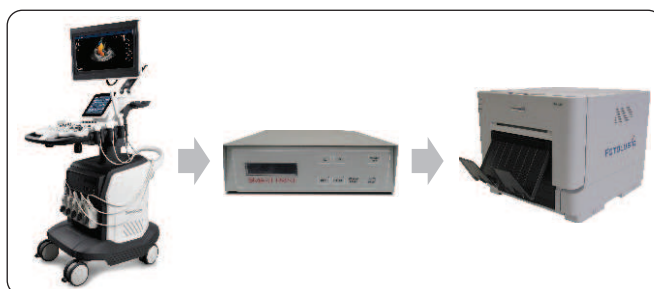
**Connectivity & Application**

**DICOM Printing (Smart Link)**



Photolus Smart Link Software interface allows to push Dicom print directly to the printer without any human interference or to push images through Photolus software & manually format layout for print as required.

**Non-DICOM Printing (Video Connectivity)**



Smart Print Hardware Box is used as interface to connect to any Imaging device via S-Video or any Video signal to transfer prints. User has selection to print Portrait (2/6) images or Landscape (4/9) images.

**Connectivity & Application**

**LAN**



RX 1 can be seamlessly connected to a lan network offering easy & fast connectivity to any imaging modality.

**USB**



RX 1 can also be directly connected to any ultrasound or workstation PC using USB connection.

**S-Video / Composite**



RX1 can also be directly connected to any ultrasound using S-Video and smart print hardware.

**BNC**



RX1 can also be directly connected to any ultrasound using BNC smart print hardware.

**Technical Specification**

Model : DSRX 1  
 Print Method : Dye Sublimation heat transfer method  
 Print Resolution : 300 dpi  
 Print Size : 6x8 in.  
 Print Number : 6x8 | 350 sheets / roll  
 Print Speed : 6x8 | 27 sec./print

Dimension : 322(W) X 351(D) X 281(H) mm  
 Weight : Approx. 14Kg  
 Power : AC 100-240 V, 50/60Hz  
 Operation Temperature : 5 to 35 Degree  
 Operating Humidity : 20 - 80 % RH

