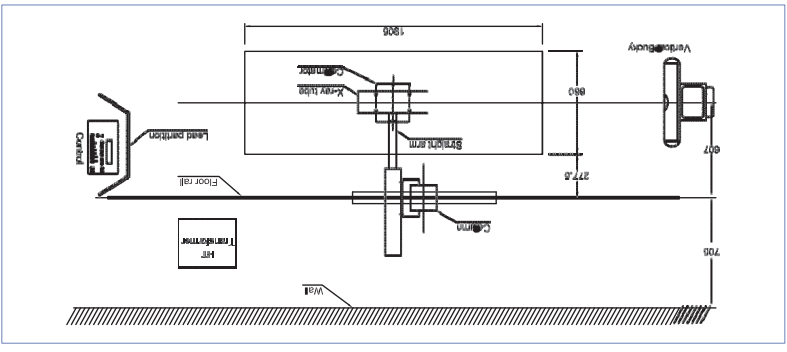


Clinical output



Room dimensions as per AFRB guideline – L 4.5 x B 4.0 x H 2.75 meters.

Contact us:

Mumbai(Corporate Office)  
401, Shiv Industrial Estate, KBB Marg,  
Chinchpokali (E), Mumbai - 400012.

Manufacturer :

MEDX TECHNOLOGIES PVT. LTD.  
34,Guru Nagar,Opp. Old Petrol Pump, Udhana,  
Surat - 394210.

Your comments and feedback are very valuable for us:  
they help us improve our service offerings.  
If you have any query or suggestion, please send a mail to  
[factory@medxtechnologies.ca](mailto:factory@medxtechnologies.ca) and we will be happy to revert.



# Radiotherapy systems MX 500 and 100

500mA and 100mA generators with a choice of Bucky  
tables.

Exceptional image quality • Reliable uptime and service • Value for money



A proven platform for performing all of your radiography special procedures and complete plain radiography. Choose among 500mA, or 100mA MX generators with 4 way floating table, 5 position manually tilting table, horizontal Bucky table and vertical Bucky. These combinations are scalable and thereby protect your investment. Balance your image quality expectations with affordability, enhancing viability and your return on investment.



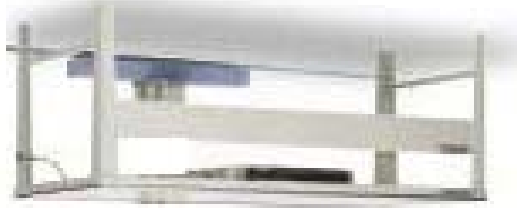
HOREX



VERTX



TILT-X



BUCKX

[Go into the details](#)

These radiography units are stationary diagnostic systems with floor to ceiling & ceiling free tube stand having counter balanced with Vertical travel of center arm. The column moves on floor and ceiling rails and has a 360° rotation. It has Magnetic locks for center arm and other movements. These systems require a minimum room height of 8.5 feet. You can choose between 100mA, or 500mA generators and any of the following tables.

**HOREX** is a horizontal Bucky table with a four way floating table top with electromagnetic locks. The sliding movement of the top is 450mm longitudinal and 340mm transverse.

**TILT-X** is a 5 position motor operated Bucky table. The motorized Bucky is counterbalanced and traverses the entire length of the table.

Optional accessories – vertical bucky, shoulder support and handgrips.

The motorized Bucky consists of a grid of 17 1/2" x 18 3/4" grid of 8:1 ratio and 103 lines/inch.

**VERTX** is a standalone vertical motorized Bucky with counter balanced height adjustment from 540 mm to 1680 mm. The grid is of size 17 1/2" x 18 3/4", 10:1 ratio and 103 lines/inch. It enables radiography of the thorax, abdomen, pelvis, skull, vertebral column and extremities in standing, sitting and recumbent positions. It accommodates a detachable chest stand for taking exposures of up to 14" x 17".

Generator	MX 100	MX 500
Radiographic rating	100mA and 100KV.	500mA and 125KV.
Large focus	100mA, 80mA, 60mA, 40mA.	300, 400 and 500mA
Small focus	Not applicable.	100, 150, and 200mA
Radiographic KV	40 to 100KV,	40 to 125KV,
Exposure time	23 step electronic timer from 0.04 to 5 sec.	96 step electronic timer from 0.02 to 5.0 second
X-ray tube	MX 100, 5A, focus 2.8mm.	20/40KW double focus rotating anode
HT transformer	Monobloc	With silicon rectifiers, supporting single tube operation
HT cable	Not applicable	8 meters
Display	KV, mA, mAs, & Sec – digital overload and x-ray on indication	KV, mA, mAs, & Sec - digital overload and x-ray on indication
Collimator	Double slot light beam Manual collimator	Double slot light beam Manual collimator
LV compensation	±10% of input voltage	20% of input voltage
Power requirement	1 phase, 220 Volts, 10 KVA, 40 Amps,	3 phase, 440 Volts, 30 KVA, 63 Amps,